

**J.LINDBERBERG + GLENMUIR**



WINTER HOLIDAY 2024

J.LINDBERG

# SALESBOOK MEN'S GLENMUIR

## INDEX

|    |                     |
|----|---------------------|
| 4  | WINTER HOLIDAY 2024 |
| 5  | COLOR CARD          |
| 7  | KNITWEAR            |
| 14 | JERSEY TOPS         |
| 16 | PANTS               |
| 19 | ACCESSORIES         |
| 21 | MEASUREMENTS        |
| 22 | CONTACTS            |



### **SALES SAMPLES**

Our available sample products for the season.



### **SUSTAINABLE CHOICE**

This item is made from Ökotex, organic, recycled or PFC-free material.





**FOR THE WINTER HOLIDAY 2024 / PRE SPRING 2025  
SEASON, WE'RE PROUD TO HAVE TEAMED UP WITH  
GLENMUIR IN A UNIQUE COLLABORATION THAT  
BRIDGES THE TIMELESS ALLURE OF GOLF'S SCOTTISH  
ROOTS WITH J.LINDEBERG'S PROGRESSIVE SPIRIT  
OF MODERN GOLFWEAR.**

Born from shared values of craftsmanship and innovation, the capsule is inspired by Glenmuir's legacy and infused with J.Lindeberg's contemporary vision – offering an elevated wardrobe that merges technical functionality with stylish design.

Drawing from the rugged landscapes and rich history of Scotland, it features exclusive prints that reflect Glenmuir's roots. For men, highlights include a hybrid windbreaker sweater with its lightweight, water-repellent and windproof qualities, making it ideal for several outdoor activities. Knitted sweaters offer luxurious comfort with 100% merino wool and cashmere, showcasing the collection's emphasis on high-quality materials, while a knitted polo presents a relaxed fit with a choice of solid or tartan check

jacquard, reflecting the collaboration's blend of tradition and modern style.

From the Women's collection, key pieces include a performance polo designed with advanced fabric technology for superior comfort and performance, and a merino polo, which offers timeless elegance with the warmth and softness of fine wool. The tech stretch skirt provides a perfect blend of style and functionality, allowing for ease of movement on the golf course.

From the refined textures of Scottish knitwear to the cutting-edge functionality of J.Lindeberg's designs, the capsule presents a unique fusion of the past and the present, designed for both newcomers and the most experienced players.



COLOR CARD

COLOR STORY



U029  
Moonbeam

6855  
JL Navy

0257  
Teal

W101  
Glenmuir Tartan  
Teal L



KENDRA PLAYSUIT | GWPA13134 | JL NAVY  
ALINA POLO | GWJT13136 | JL NAVY  
THALIA KNITTED CARDIGAN | GWKW13127 | TEAL  
PILA PANTS | GWPA13130 | JL NAVY

## KNITWEAR



W104 GLENMUIR TARTAN TEAL L



### BREA KNITTED V-NECK GWKW13135 | ALPACA WOOL NYLON MIX

Knitted V-neck sweater in a seasonal tartan check jacquard pattern.

- V-neck
- Alpaca wool blend
- Glenmuir embroidery logo at sleeve
- Bridge embroidery at chest
- Rib at neck, cuff and bottom
- Glenmuir X JL hangtags and labels
- Soft
- Stretch

Size: XS-XL  
Material: 32% Polyamide/Nylon,  
32% Alpaca, 31% Wool,  
5% Elastane/Spandex  
Ökotex100



BREA KNITTED V-NECK | GWKW13135 | TARTAN TEAL  
KATENA COMPRESSION TOP  
| GWJT13137 | JL NAVY  
ARELLA PLEATED SHORTS  
| GWPA13129 | JL NAVY

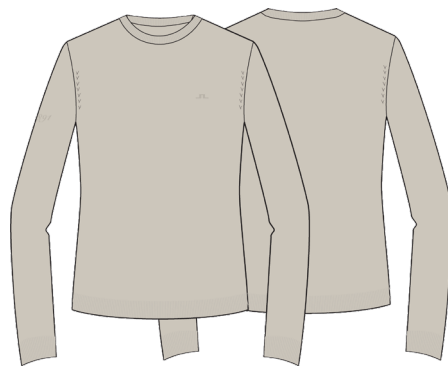




## KNITWEAR



6855 JL NAVY



U029 MOONBEAM



### GIA CASHMERE CREWNECK GWKW13131 | LIGHT CASHMERE

Classic cashmere crewneck sweater.

- Made in Scotland
- 100% cashmere
- Glenmuir embroidery logo at sleeve
- Bridge embroidery at chest
- Rib at neck, cuff and bottom
- Glenmuir X JL hangtags and labels
- Super soft
- Stretch
- Lightweight

Size: XS-XL  
Material: 100% Cashmere



KNITWEAR



6855 JL NAVY



0257 TEAL



THALIA KNITTED CARDIGAN  
GWKW13127 | TOUR MERINO

Classic merino cardigan with a fashionable touch.  
Adjustable laces at back to achieve a more boxy fit.

- Round neck
- Tubular plain knit collar, placket and bottom
- Glenmuir embroidery logo at sleeve
- Bridge embroidery at chest
- Rib at cuffs
- Button closure
- Glenmuir X JL hangtags and labels
- Mulesing free
- Moisture management
- Natural odour control
- Thermo-regulation
- Soft

Size: XS-XL  
Material: 100% Wool  
Ökotex100



THALIA KNITTED CARDIGAN  
| GWKW13127 | JL NAVY  
KATENA COMPRESSION TOP  
| GWJT13137 | TARTAN TEAL  
PILA PANTS | GWPA13130  
| MOONBEAM



## KNITWEAR



6855 JL NAVY



O257 TEAL



### AMANDINE KNITTED POLO GWKW13132 | VISCOSE/POLYESTER BLEND

Knitted golf polo with a feminine touch. Using a new drapy viscose poly blend yarn and got semi-transparent sleeves as a nice detail.

- Rib collar
- 3 button placket
- Glenmuir embroidery logo at center back
- Bridge embroidery at chest
- Tubular plain knit at cuffs
- Glenmuir X JL hangtags and labels
- Lightweight

Size: XS-XL  
Material: 50% Viscose, 50% Polyester



AMANDINE KNITTED POLO  
| GWKW13132 | JL NAVY  
ARELLA PLEATED SHORTS  
| GWPA13129 | JL NAVY





# KNITWEAR



6855 JL NAVY



U029 MOONBEAM



## ZELIA HYBRID VEST

GWKW13128 | SOFT TENCEL WOOL BLEND

Knitted hybrid vest with a woven fabric layered at front. Works perfectly over a long sleeved compression top underneath.

- Hood
- Tencel wool blend
- Glenmuir embroidery logo at center back
- Bridge embroidery at center front
- Glenmuir X JL hangtags and labels
- Mulesing free
- Lightweight

Size: XS-XL

Material: 75% Tencel, 25% Wool, 14gg  
Ökotex100

## KNITWEAR



6855 JL NAVY



### KARY BOLERO GWKW13477 | WOOL POLYESTER POLYAMIDE

Heavier wool blend bolero with asymmetrical overlapping rib at front. Sleeves in tartan check jacquard pattern.

- Rib roll neck collar
- Asymmetrical shape at front rib
- Jacquarded sleeves
- Rib at cuff
- Glenmuir embroidery logo at center back
- Bridge embroidery at center front
- Glenmuir X JL hangtags and labels
- Soft

Size: XS-XL  
Material: 55% Wool, 35% Polyester,  
10% Polyamide/Nylon  
Ökotex100



KARY BOLERO | GWKW13477 | JL NAVY  
KATENA COMPRESSION TOP | GWJT13137 | JL NAVY  
PILA PANTS | GWPA13130 | JL NAVY



## KNITWEAR



6855 JL NAVY



### ANDREA KNITTED DRESS GWSD13133 | VISCOSE/ POLYESTER BLEND

Knitted dress in a new drapy viscose poly blend yarn with a feminine silhouette. Shaped at waist with pintuck details.

- Rib collar and cuffs
- 3 button placket
- Pintuck stitches at waist
- Glenmuir embroidery logo at sleeve
- Bridge embroidery at chest
- Glenmuir X JL hangtags and labels
- Soft
- Stretch

Size: XS-XL  
Material: 50% Viscose, 50% Polyester



## JERSEYTOPS



W104 GLENMUIR TARTAN TEAL L



6855 JL NAVY



### KATENA COMPRESSION TOP GWJT13137 | FLEX COMPRESSION

Base layer compression top perfect underneath or worn as is. Choose between solid navy or tartan check all over print.

- High neck
- Longsleeve
- Glenmuir silicone logo at center back
- Bridge silicone logo at center front
- Slim fit
- Glenmuir X JL hangtags and labels
- Soft compression
- Fast dry
- 4 way stretch
- Moisture transportation

Size: XS-XL  
Material: 88% Polyester, 12% Elastane/  
Spandex  
Ökotex100



KATENA COMPRESSION TOP | GWJT13137 | TARTAN TEAL  
PILA PANTS | GWPA13130 | MOONBEAM



## JERSEYTOPS



6855 JL NAVY



U029 MOONBEAM



### ALINA POLO GWJT13136 | SOFT TX JERSEY

Polo in our Soft TX Jersey quality. Hidden button placket and contrast jacquard stripe details.

- Rib collar
- 4 button placket
- Contrast jacquard details
- Glenmuir silicone logo at sleeve
- Bridge silicone logo at chest
- Glenmuir X JL hangtags and labels
- Technical 4 way stretch
- Moisture transportation
- Fast dry
- Soft TX Jersey

Size: XS-XL  
Material: 100% Polyester  
Ökotex100



OSANA CAP | GWAC13658 | MOONBEAM  
ALINA POLO | GWJT13136 | MOONBEAM  
ARELLA PLEATED SHORTS  
| GWPA13129 | MOONBEAM

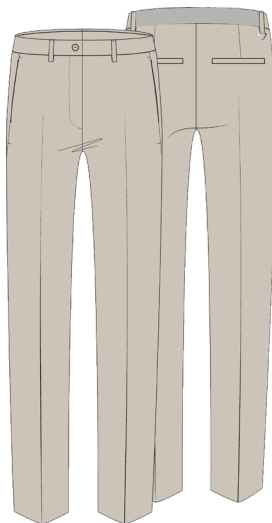




## PANTS



6855 JL NAVY



U029 MOONBEAM



### PILA PANTS GWPA13130 | MICRO HIGH STRETCH

Introducing our new pant with a mid rise waist and straighter leg. In our Micro High Stretch quality for best comfort.

- Mid-rise waistline
- Front and back pockets
- Partly elasticated w/b with D-ring detail at back
- Glenmuir embroidery logo at back
- Bridge rivet at front
- Zip fly with button closure
- Glenmuir X JL hangtags and labels
- Lightweight, water repellent and breathable
- 4 way stretch and fast dry
- Bluesign certified and PFC free

Size: 25-32

Material: 48% Polyester, 38% Recycled Polyester, 14% Elastane/ Spandex  
Bluesign, GRS, Ökotex100

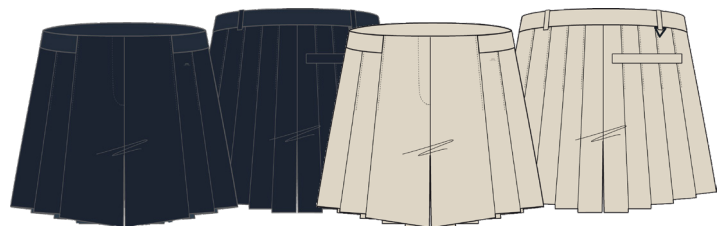


THALIA KNITTED CARDIGAN | GWKW13127 | JL NAVY  
KATENA COMPRESSION TOP | GWJT13137 | TARTAN TEAL  
PILA PANTS | GWPA13130 | MOONBEAM





# PANTS



6855 JL NAVY



U029 MOONBEAM



## ARELLA PLEATED SHORTS GWPA13129 | MICRO HIGH STRETCH

Introducing our new pleated shorts. High waisted and pleats all around to get the look of a skirt.

- High-rise waistline
- Concealed pockets at front
- One back welt pocket
- Bridge rivet logo
- Piping along side
- D-ring detail at back
- Comes with inner shorts
- Glenmuir X JL hangtags and labels
- Lightweight, water repellent and breathable
- 4 way stretch and fast dry
- Bluesign certified and PFC free

Size: 25-32  
Material: 48% Polyester, 38% Recycled Polyester, 14% Elastane/ Spandex  
Bluesign,GRS,Ökotex100



AMANDINE KNITTED POLO | GWKW13132 | JL NAVY  
ARELLA PLEATED SHORTS | GWPA13129 | JL NAVY  
CHECK KNEE SOCKS | GWAC13657  
| TARTAN TEAL



# PANTS



6855 JL NAVY



## KENDRA PLAYSUIT GWPA13134 | MICRO HIGH STRETCH

Introducing our new playsuit with perforated Bridge at back and open back detail for a better ventilation. In our Micro High Stretch quality for best comfort.

- Perforated Bridge at back
- Pockets at front
- Buckle belt at waist
- Hi-shine bridge at chest
- Zipper closure
- Hidden placket
- Glenmuir X JL hangtags and labels
- Lightweight, water repellent and breathable
- 4 way stretch and fast dry
- Bluesign certified and PFC free

Size: XS-XL  
Material: 48% Polyester, 38% Recycled Polyester, 14% Elastane/ Spandex  
Bluesign,GRS,Ökotex100



KENDRA PLAYSUIT | GWPA13134 | JL NAVY  
CHECK KNEE SOCKS | GWAC13657  
| TARTAN TEAL





ACCESSORIES



U029 MOONBEAM



OSANA CAP  
GWAC13658 | TECH STRETCH

Cap in tech stretch quality. Big elastic at back to give the perfect fit and comfort.

- Glenmuir logo at left side front
- Bridge logo at right side front
- Absorbing cotton terry sweatband
- Circumference 56cm
- Glenmuir X JL hangtags and labels
- Fast dry
- Lightweight

Size: One Size  
Material: 97% Polyester, 3% Elastan  
Ökotex100



OSANA CAP | GWAC13658 | MOONBEAM  
ALINA POLO | GWJT13136 | MOONBEAM  
ARELLA PLEATED SHORTS  
| GWPA13129 | MOONBEAM



# ACCESSORIES



W104 GLENMUIR TARTAN TEAL L



## CHECK KNEE SOCKS GWAC13657 | COMBED COTTON

Knee socks in combed cotton quality. Shaft in tartan check jacquard pattern.

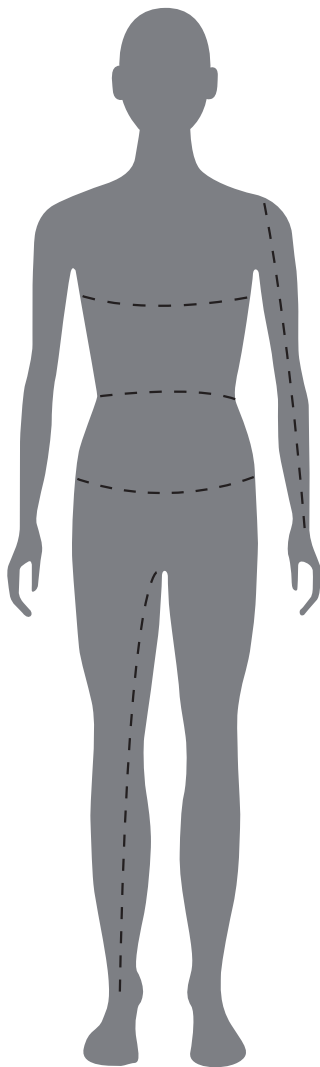
- Made in Sweden
- Cotton stretch quality
- Reinforcement at toe and heel
- Glenmuir X JL hangtags and labels

Size: 35-40  
Material: 75% Cotton, 15% Polyamide/  
Nylon, 10% Lycra  
Ökotex100





# MEASUREMENTS



- CHEST

Measure around the chest at the fullest part, placing the tape close up under the arms.
- WAIST

Measure your waist at its narrowest part.
- SEAT

Measure your hip at the widest part.
- ARM

From the tip of your shoulder to the wrist.
- INSIDE LEG

The distance from the top of your inside leg to the floor.

|            | XS        | S       | M               | L        | XL       | XXL      |
|------------|-----------|---------|-----------------|----------|----------|----------|
| LENGTH     |           |         | 168/66D172/67,5 |          |          |          |
| CHEST      | 78/30,5   | 84/33   | 90/35,5         | 96/38    | 102/40   | 108/42,5 |
| WAIST      | 62/24,5   | 68/27   | 74/29           | 80/31,5  | 86/34    | 92/36    |
| SEAT       | 87/34,5   | 93/36,5 | 99/39           | 105/41,5 | 111/43,5 | 117/46   |
| TIGH       | 55,5/22   | 57/22,5 | 58,5/23         | 60,5/24  | 61,5/24  | 63/25    |
| INNER LEG  | 77,5/30,5 | 79/31   | 80,5/31,5       | 82/32,5  | 83,5/33  | 85/33,5  |
| BICEP      | 24/9,5    | 26/10   | 27,5/11         | 29,5     | 31/12    | 33/13    |
| ARM LENGTH | 55,5/22   | 57/22,5 | 58,5/23         | 60/11,5  | 61,5/24  | 63/25    |

GARMENT MEASUREMENTS

All measurements are in cm and inches and show the total garment width.  
Size is M and 31".

# CONTACTS

## WHOLESALE FASHION

**GLOBAL SALES DIRECTOR / FASHION**  
Mads Thisted  
mads.thisted@jlindeberg.com  
+ 46 70 353 89 84

**NORDICS / BALTICS**  
**SALES MANAGER & TEAM LEAD**  
Hannes Alpsjö  
hannes.alpsjo@jlindeberg.com  
+ 46 73 087 49 88

**SALES EXECUTIVE / NORWAY**  
Jonas Olsson  
jonas.olsson@jlindeberg.com  
+ 47 966 83 869

**SALES EXECUTIVE / SWEDEN**  
Amanda Nordquist  
amanda.nordquist@jlindeberg.com  
+ 46 73 819 17 00

**SR SALES EXECUTIVE / SWEDEN**  
Sophie Olsson  
sophie.olsson@jlindeberg.com  
+ 46 73 033 16 00

**MID EUROPE**  
**SR SALES MANAGER**  
Alexander Abraham  
alexander.abraham@jlindeberg.com  
+ 49 151 1167 21 65

**DENMARK**  
**COUNTRY MANAGER**  
Marius Pedersen  
marus.pedersen@jlindeberg.com  
+ 45 31 22 60 23

**FINLAND & BALTICS**  
**SALES MANAGER**  
Sasu Kurki  
HYPERLINK sas@theagencyfin.fi  
+ 358 40 523 0279

**UK / SALES MANAGER**  
Joff Fisher  
joff.fisher@jlindeberg.com  
+ 44 7726 241254

**DIRECTOR OF SALES US**  
Karen Castellano  
karen.castellano@jlindeberg.com  
+ 1 (917) 747 77 45

## WHOLESALE SPORT

**GLOBAL SALES DIRECTOR / SPORT**  
Florian Gross  
florian.gross@jlindeberg.com  
+ 49 151 516 117 5

**NORTH AMERICA PRESIDENT**  
Scott Davis  
scott.davis@jlindeberg.com  
+ 1 (561) 818 85 57

**MIDEU SALES DIRECTOR / SPORT**  
Mario Messerli  
mario.messerli@jlindeberg.com  
+ 41 79 444 8605

**MID EUROPE SALES MANAGER**  
**GOLF AND TENNIS**  
Felix Burmann  
felix.burmann@jlindeberg.com  
+ 49 174 2093925

**MID EUROPE SALES MANAGER**  
**SKI & OUTDOOR**  
Max Kreipl  
max.kreipl@jlindeberg.com  
+ 49 160 2419 220

**GERMANY / EASTERN EUROPE**  
**SALES EXECUTIVE**  
**GOLF AND TENNIS**  
Fabio Irrgang  
Fabio.Irrgang@jlindeberg.com  
+49 151 70408190

**SWITZERLAND / COUNTRY MANAGER**  
Reto Lendenmann  
Reto.lendenmann@jlindeberg.com  
+ 41 79 287 93 25

**ITALY**  
Philipp Putzer/Summit Sports  
philipp@summitsports.it  
+ 39 335 5631410  
**UK SALES DIRECTOR / SPORT**  
Rob Tankard  
robert.tankard@jlindeberg.com  
+ 44 7817221425

**UK SALES MANAGER /**  
**GOLF AND TENNIS**  
Chris Watson  
chris.watson@jlindeberg.com  
+ 44 7540368828

**UK SENIOR SALES EXECUTIVE /**  
**GOLF AND TENNIS**  
**NORTHERN UK AND IRELAND**  
Rob Allison  
+ 44 7754678772  
rob.allison@jlindeberg.com

**SOUTH REGION /**  
**SPORT SALES EXECUTIVE**  
Ben Plumridge  
ben.plumridge@jlindeberg.com  
07857937593

**UK / SALES MANAGER LIFESTYLE & SPORT**  
Joff Fisher  
joff.fisher@jlindeberg.com  
+ 44 7726 241254

**SCANDINAVIA WHOLESALE**  
**MANAGER / SPORT**  
Joakim Ågren  
joakim.agren@jlindeberg.com  
+ 46 76 000 64 10

**DENMARK**  
**COUNTRY MANAGER SPORT / FASHION**  
Marius Pedersen  
marus.pedersen@jlindeberg.com  
+45 31 226 023

**NORTH SWEDEN AND KA**  
**SENIOR SALES EXECUTIVE**  
Henrick Broman  
Henrick.broman@jlindeberg.com  
+46 70 886 65 65

**SOUTH SWEDEN**  
**SALES EXECUTIVE**  
Lisa Hörnblad  
Lisa.hornblad@jlindeberg.com  
+46 70 527 23 19

**JEIJE AB FINLAND / BALTICS SPORT**  
Jari Tanninen  
Jari.tanninen@jeije.fi  
+358 40 022 3288

**CHINA**  
Winston Lowe  
winston.lowe@jlindeberg.com.com

## DISTRIBUTORS

**EXPORT MANAGER**  
Joakim Westtorp  
joakim.westtorp@jlindeberg.com  
+ 46 73 421 66 60

**SALES MANAGER ASIA & SOUTH**  
**PACIFIC**  
Mikaela Laurén  
mikaela.lauren@jlindeberg.com  
+46 70 749 59 68

**BENELUX / LEXSON BRAND**  
Luke vad Shaik  
luke@lexson.com  
+31 76 522 3186

**SOUTH KOREA /**  
**SHINSEGAE INTERNATIONAL**  
claire.kim@sikorea.co.kr  
+ 82 10 886 116 04

**HONG KONG / YGM TRADING LTD**  
maylaw@ygmtrading.com  
+ 85 29 131 83 78

**AUSTRALIA / UCHOOSE GOLF**  
clint.anderson@uchoosegolf.com  
+ 61 45 105 22 35

**SPAIN / PORTUGAL/ GREECE**  
**FRANCE GOLF**  
**HOLIDAY GOLF**  
Stefan Tjellander  
stefan.tjellander@holidaygolf.com  
+34 666 56 1057

**SOUTH EAST ASIA / SUN GOLF**  
tanjh@sungolf.org  
+65 8533 9800

**CANADA / TC2 GROUP**  
mail@tc2group.ca  
416 703 4566

**JAPAN / FDR CORPORATION**  
seiichi.sakaeda@fdrsports.co.jp  
+080 4443 0237

**UNITED ARAB EMIRATES**  
**E GOLF INTERNATIONAL LLC**  
Dean Cheasley  
dean.cheasley@egolfoutlet.ae  
+ 97 1506 53 9617

**SOUTH AMERICA / CARIBBEAN**  
**BORA SERVICES**  
iviamata@boraservicesrl.com  
+1 (829) 659 9606

## MARKETING & COMMUNICATIONS

**HEAD OF MARKETING & PR**  
Karin Elwin  
karin.elwin@jlindeberg.com  
+46 735 42 09 55

**WHOLESALE SPORTS**  
**MARKETING MANAGER**  
Jonas Janssen  
jonas.janssen@jlindeberg.com

**PROJECT MANAGER**  
Sara Radjaian  
sara.radjaian@jlindeberg.com  
+46 704 21 13 21

**PR MANAGER**  
Elin Engelbrektsson  
elin.engelbrektsson@jlindeberg.com  
+46 708 41 61 62

**SENIOR MARKETING & PR USA**  
Emilia Esser  
emilia.esser@jlindeberg.com  
+1 (929) 364 3679

**MARKETING & PR CHINA**  
Xiaolei Ma  
xiaolei@jlindeberg.com.cn

