



SPRING/SUMMER 2025

J.LINDBERG

SALESBOOK WOMEN'S OUTDOOR

INDEX

3	SPRING SUMMER 2025
4	COLOR CARD
5	JERSEY TOPS
8	JERSEYSWEAT
13	PANTS
18	OUTERWEAR
26	ACCESSORIES
27	MEASUREMENTS
28	CONTACTS



FOCUS ITEMS

Our focus products for the season.



SALES SAMPLES

Our available sample products for the season.



SUSTAINABLE CHOICE

This item is made from organic, recycled or PFC-free material.



CONTINUING THE THEME OF A SUMMER TOUR, OUR SPORTS COLLECTION TAKES INSPIRATION FROM THE ATHLETIC HAVENS OF THE US, CELEBRATING ICONIC SPORTS AND THE LIFESTYLE THAT SURROUNDS THEM. IT MERGES CLASSIC AESTHETICS WITH CONTEMPORARY SPORTSWEAR TECHNOLOGY, HIGHLIGHTING OUR INNOVATIVE APPROACH TO BRIDGE SPORTS AND FASHION.

The SS25 collection draws its primary inspiration from the prestigious golf majors like the Masters at Augusta and the US Open, infusing elements from these iconic tournaments into each design. Our color strategy this season is intentionally narrow, focusing on two key narratives that embrace both nostalgia and a forward-thinking graphical approach, ensuring every piece is both functional on the green and stylish beyond it. Vivid azalea pinks and fresh hues pay homage to Augusta's famous 13th hole, while a sophisticated palette of rainwash blues, black and greys reflects the essence of Oakmont and Cave Hill. Micro prints and intricate embroidery, such as the Eisenhower tree on polo shirts, capture the spirit and heritage of the courses.

Dedicated to the golf enthusiast, the golf collection celebrates our partnership with USA Golf, featuring designs inspired by the great American courses. It includes technically refined pieces like the lightweight jerseys and hybrid knits in lyocell and silk, which offer both luxury and functionality. We're also extending our shoe collection with a new high-top and low-top sneaker for both men and women, marking the next step in our golf shoe revolution.

The outdoor segment is inspired by the rugged beauty of Annapolis, with pieces crafted to withstand the elements while easing flex-

ibility and movement. This includes the Pro Pack styles featuring advanced fabrics like knitted sweaters that integrate mesh and 3D knitting technologies. The collection also highlights a versatile range of accessories including bags and belts, focusing on functionality with a stylish edge, suitable for both urban explorers and trail adventurers.

Enhancing athletic performance without sacrificing the signature J.Lindeberg edge, the SS25 sports collection is as innovatively sporty as it is stylish. Our innovations also extend to the golf course, with "Pro Tech" pieces made from performance fabrics such as the thermo-regulating 37.5 Jersey and Tech Mesh. "Lux Golf" offers elevated polos and pants, as well as waterproof and wind proof shell jackets and knitwear. Both ski and golf includes "Back to Back Bridge" styles, a new iconic design with a cut and sew Bridge logo detail, as well as "Motion Mid-Layers" featuring breathable Motion Merino and stretchy Future Fleece for ultimate comfort.

As a bridge connecting clubhouses, cultures and communities, the Fall Winter 2024 sport collection merges retro vibes with contemporary techniques – offering versatile pieces ideal for a modern active lifestyle.

COLOR CARD

COLOR STORY



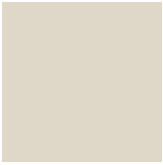
0000
White



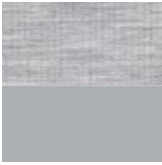
O356
Clematis Blue



M311
Oil Green



U029
Moonbeam



U199 Lt Grey Melange
U232 High Rise



9999
Black



U250 Snake Rock
Moonbeam M

JERSEY TOPS



9999 BLACK
9999 BLACK

U199 LIGHT GREY MELANGE
9999 BLACK



BELLA WOOL LS T-SHIRT
AWJT12282 | MERINO WOOL

Bella Wool Long Sleeve is made from our merino wool jersey with a merino mesh at back for a nice comfort and breathability.

- Long sleeve
- High shine Bridge logo at chest
- Wool blend mesh at sleeves and back
- Lightweight
- Soft and airy hand feel
- Moisture transportation
- Fast dry

Size: XS-XL
Material: 100% Merino Wool
145 g/m2
Woolmark
Back panel & Sleeves: 68% Merino Wool,
25% Polyamide, 7% Elastan



9999 BLACK
9999 BLACK

U199 LIGHT GREY MELANGE
9999 BLACK



BELLA WOOL T-SHIRT
AWJT12283 | MERINO WOOL

Bella Wool T-shirt is made from an active merino wool jersey. A comfortable, breathable short sleeve for an active lifestyle.

- Short sleeve
- High shine Bridge logo at chest
- Wool blend mesh at sleeves and back
- Lightweight
- Soft and airy hand feel
- Moisture transportation
- Fast dry

Size: XS-XL
Material: 100% Merino Wool
145 g/m2
Woolmark
Back panel & Sleeves: 68% Merino Wool,
25% Polyamide, 7% Elastan

JERSEY TOPS



9999 BLACK
9999 BLACK

U199 LIGHT GREY MELANGE
9999 BLACK



LANDA LS T-SHIRT
AWJT12236 | DRY MESH

Carrying over our Landa long sleeved T-shirt in a new Dry Mesh fabric for high-performance and a sporty feel.

- Long sleeve
- Half zip with zipguard
- Stay down puller
- Bridge logo at chest
- J.Linderberg text at back
- Flatlock details
- Mesh panels
- Soft and stretchy
- Wicking
- Fast dry

Size: XS-XL
Material: 93% Polyester, 7% Spandex
160g/m2
Ökotex100
Panels: 91% Polyester,
9% Elastane/Spandex



9999 BLACK
9999 BLACK

C118 MOONBEAM MELANGE
9999 BLACK

M311 OIL GREEN
9999 BLACK



LANDA T-SHIRT
AWJT12237 | DRY MESH

Carrying over our Landa T-shirt in our new light-weight Dry Mesh fabric for high-performance and sporty feel.

- Short sleeve
- Half zip with zipguard
- Stay down puller
- Bridge logo at chest
- J.Linderberg text at back
- Flatlock details
- Mesh panels
- Soft and stretchy
- Wicking
- Fast dry

Size: XS-XL
Material: 93% Polyester, 7% Spandex
160g/m2
Ökotex100
Panels: 91% Polyester,
9% Elastane/Spandex

JERSEY TOPS



9999 BLACK
9999 BLACK



O356 CLEMATIS BLUE
9999 BLACK



U029 MOONBEAM
O356 CLEMATIS BLUE



TANICE TOP AWJT12232 | AIR LIGHT STRETCH JERSEY

A sleeveless sporty top made from our super lightweight jersey fabric. Featuring a racer back in contrast fabric for better movement and comfort while being active.

- Sleeveless
- J.Lindeberg print at front
- Racer back construction for better movement
- Contrast mesh fabric at sides
- Decorative flatlock seams
- Super lightweight
- Soft and airy hand feel
- Moisture transportation
- Fast dry

Size: XS-XL
Material: 80% Polyester, 20% Elastane/
Spandex, 86g/m2
Ökotex100
Side panel: 91% Polyester, 9% Spandex



JERSEYSWEAT



9999 BLACK
9999 BLACK

O356 CLEMATIS BLUE
9999 BLACK



MILLY POLARTEC HOOD AWJS12439 | POLARTEC POWER STRETCH

High performance hood mid layer in polartec power stretch with brushed inside.

- 2 way zippers stay down puller
- Hi shine Bridge at chest
- Elastic biding at hood, sleeve end and bottom hem
- Pockets with zippers
- Excellent stretch and recovery performance
- Wicking
- Brushed inside for comfort and warmth
- High pile on inside
- Fast dry

Size: XS-XL
Material: 84% Recycled Polyester,
16% Spandex
224g/m2, GRS, Ökotex100
Lining: Recycled TX Jersey Solid
100% Polyester
Ökotex100



MILLY POLARTEC HOODIE - AWJS12439 | CLEMATIS BLUE
ANGIE PANT | AWPA12439 | CLEMATIS BLUE

JERSEYSWEAT



9999 BLACK
9999 BLACK



O356 CLEMATIS BLUE
9999 BLACK



MILLY POLARTEC MID LAYER AWJS12251 | POLARTEC POWER STRETCH

High performance mid layer in polartec power stretch with brushed inside. 224g/m2

- 2 way zippers with branded tab
- Hi shine Bridge at chest
- Elastic biding at sleeve end and bottom hem
- Pockets with zippers
- Excellent stretch and recovery performance
- Wicking
- Brushed inside for comfort and warmth
- High pile on inside
- Fast dry

Size: XS-XL
Material: 84% Recycled Polyester,
16% Spandex
224g/m2, GRS, Ökotex100
Lining: Recycled TX Jersey Solid
100% Polyester
Ökotex100



U029 MOONBEAM
9999 BLACK



M311 OIL GREEN
9999 BLACK



LUCIA ZIP MOCK NECK AWJS12254 | PIMA COTTON POLYESTER

Pima cotton lifestyle sweatshirt elevated with mercerized cotton, that gives a settle exclusive shine to the fabric.

- Rib at sleeve end and bottom hem
- Hi shine Bridge logo at chest
- Hi shine J.Lindberg logo at back neck
- Hood with drawstrings
- Pocket at front
- Brushed inside
- Mercerized cotton shine
- Soft
- Comfortable cotton feel

Size: XS-XL
Material: 50% Cotton (Pima), 27% Polyester, 23% BCI Cotton
260g/m2
BCI, Ökotex100

JERSEYSWEAT



9999 BLACK
9999 BLACK



SKY HOOD SWEATSHIRT
AWJS12987 | PIMA COTTON POLYESTER

Pima cotton lifestyle sweatshirt elevated with mer-
cerized cotton, that gives a settle exclusive shine to
the fabric.

- High rib at bottom hem
- Rubber print logo at chest
- Stay down puller
- Rib at sleeve end
- Cropped length
- Brushed inside
- Mercerized cotton shine
- Soft
- Comfortable cotton feel

Size: XS-XL
Material: 50% Cotton (Pima), 27% Poly-
ester, 23% BCI Cotton
260g/m2
BCI,Ökotex100



U029 MOONBEAM



AIRY ZIP SWEATSHIRT
AWJS12986 | SOFT SPACER JERSEY

Lifestyle sweatshirt featuring a print artwork at back
and an elastic drawcord and adjuster at bottom
hem for a customized fit.

- Hi shine Bridge logo at chest
- Elastic drawcord and adjuster at bottom hem
- Zipper with stay down puller
- Print artwork at back
- 4-way stretch
- Spacer fabric
- Soft and comfortable
- Cooling hand feel

Size: XS-XL
Material: 44% Recycled Polyester, 30%
Tencel, 20% Polyester, 6%
Elastane/Spandex
280g/m2
GRS,Other,Ökotex100
Certified, Recycled

JERSEYSWEAT



O356 CLEMATIS BLUE
9999 BLACK



U232 HIGH RISE
9999 BLACK



U029 MOONBEAM
9999 BLACK



ELLA ZIP HOOD AWJS12250 | SPACER LIGHT

Hood in silky smooth spacer fabric with contrast panels and two-way front zipper.

- 2-way front zipper with stay down puller
- Cut and sawn contrast panels
- Rounded silicone J.lindeberg text at sleeve
- Structured spacer fabric
- Soft
- Fast drying

Size:	XS-XL
Material:	58% Polyester, 42% Recycled Polyester 280g/m2 GRS,Ökotex100, Recycled
Lining:	TX Jersey Solid 100% Polyester Ökotex100



JERSEYSWEAT



9999 BLACK
9999 BLACK



O356 CLEMATIS BLUE
9999 BLACK



M311 OIL GREEN
9999 BLACK



U250 SNAKE ROCK MOONBEAM M
9999 BLACK



LOUISE TIGHTS AWJS12253 | LUX SCULPT

Sculpting tights crafted from our LUX sculpt fabric with a pocket at side and performing gusset construction for comfort.

- Tight fitted in a shaping fabric
- Right side pocket
- Wide waist with taped seams
- Hi shine silicone Bridge at back waist band
- Soft flatlock seams
- Double needle stitch at bottom leg
- High waist
- Gusset
- Shaping fabric
- 4-way stretch

Size: XS-XL
Material: 66% Polyester, 34% Elastane/
Spandex, 210g/m2
Ökotex100
Measurements: Inseam size S; 73cm

LOUISE PRINTED TIGHTS AWJS12980 | LUX SCULPT

Sculpting tights crafted from our LUX sculpt fabric with a pocket at side and performing gusset construction for comfort.

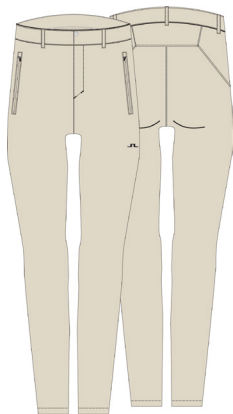
- Tight fitted in a shaping fabric
- Right side pocket
- Wide waist with taped seams
- Hi shine silicone Bridge at back waist band
- Soft flatlock seams
- Double needle stitch at bottom leg
- High waist
- Gusset
- Shaping fabric
- 4-way stretch

Size: XS-XL
Material: 66% Polyester, 34% Elastane/
Spandex, 210g/m2
Ökotex100
Measurements: Inseam size S; 73cm

PANTS



O356 CLEMATIS BLUE
9999 BLACK



U029 MOONBEAM
9999 BLACK



ANGIE PANT AWPA12309 | 37,5 DOUBLE WEAVE

Angie is made from the 37,5 ® high tech heat and moisture regulating material, giving you the best possible outdoor experience.

- Zip at fly
- Exposes zippers
- Beltloops
- Zip side pockets
- Bridge logo
- Press button at CF
- High-rise waistline
- Slim fit
- 37.5 tecnology
- Heat and moisture regulating material
- Breathable, stretch, fast dry

Size:	25-32
Material:	53% Polyester, 37% Recycled Polyester, 10% Spandex, 124 g/m2 GRS, Ökotex100, Recycled, PFC-free
Lining:	W-TL108-1 Mesh Hwa Fune 100% Polyester, Bluesign
Measurement:	Inseam in 27 is 77cm



9999 BLACK
9999 BLACK



U029 MOONBEAM
9999 BLACK
9999 BLACK



ANGIE SHORTS AWPA12308 | 37,5 DOUBLE WEAVE

Angie is made from the 37,5 ® high tech heat and moisture regulating material, giving you the best possible outdoor experience.

- High-rise waistline
- Side pockets
- Bridge logo
- Belt loops
- Press button at CF
- 37,5 technology
- Heat and moisture regulating material
- Breathable
- Stretch
- Fast dry

Size:	25-32
Material:	53% Polyester, 37% Recycled Polyester, 10% Spandex, 124 g/m2 GRS, Ökotex100, Recycled, PFC-free
Lining:	W-TL108-1 Mesh Hwa Fune 100% Polyester, Bluesign
Measurement:	Inseam in 27 is 21cm

PANTS



9999 BLACK
9999 BLACK



ISABELLA PANT AWPA12289 | 3L PRO

Rainproof pants. Lightweight yet fully protective from rain and wind. Fully taped and with waterproof zippers. Fabric features a small ripstop.

- J.Lindeberg reflective print on leg
- Bridge logo on left leg
- Aquaguard zips at pockets and bottom leg
- Hidden zip at fly
- Elastic waistband and belt loops
- Fully seamsealed and taped
- Waterproof 20K Breathability 20K
- Windproof
- Durable weave structure
- 3 layer fabric

Size: XS-XL
Material: 100% Nylon, 94gr/m2
Bluesign, PFC-free
Measurements: Inseam in size S is 80cm



PANTS



9999 BLACK

M311 OIL GREEN



NOVIA PRO PACK PANT
AMPA12312 | LIGHT POLY STRETCH RECYCLED

Novia Pro Pack Pant is a wind blocking pant.
Perfect layering piece and also packable.

- Zipped pockets
- Elasticated waist with draw cord
- Packable in pocket bag
- Drawcords cuff
- Side pockets
- Lightweight
- Wicking
- Breathable
- Fast dry

Size: XS-XL
Material: 64% Recycled Polyester, 36% Polyester 78 g/m2 Bluesign,GRS,Ökotex100, Recycled,PFC-free
Measurements: Inseam in size S is 77cm



9999 BLACK

M311 OIL GREEN



NOVIA PRO PACK SHORTS
AWPA12310 | LIGHT POLY STRETCH RECYCLED

Novia pro pack shorts is a wind block pant perfect
layering piece and also packable.

- Zipped pockets
- Elasticated waist
- Packable in pocket bag
- Drawcords at waist
- Lightweight
- Wicking
- Breathable
- Fast dry

Size: XS-XL
Material: 64% Recycled Polyester, 36% Polyester 78 g/m2 Bluesign,GRS,Ökotex100, Recycled,PFC-free
Lining: 87% Polyester, 13% Elastane/ Spandex Ökotex100
Measurement: Inseam in size S 11,75cm, inner shorts; 13cm



PANTS



9999 BLACK



0356 CLEMATIS BLUE
9999 BLACK



U029 MOONBEAM
9999 BLACK



ARIANA SOFTSHELL PANT AWPA12291 | 37,5 DOUBLE WEAVE

New pants in 37,5 and TX shield 3L. Experience optimal comfort in any weather with advanced temperature regulating technology.

- Three spacious front hands pocket
- Bridge logo on right hand leg
- Beltloops
- Laminated parts to keep you dry
- Patented 37,5 technology from Cocona
- Helps to regulate optimal body temperature using volcanic ash technology
- Flexible 4-way stretch
- Lightweight softshell

Size: XS-XL

Material: 53% Polyester, 37% Recycled Polyester, 10% Spandex, 214gr/m2 GRS, Ökotex100, Recycled, PFC-free

Measurements: Inseam in size S is 77cm



LYDE CAP | AMAC12173 | MOONBEAM
SAMIL GROEVED SOFTSHELL JKT | AWOW12218 | CLEMATIS BLUE
ARIANA SOFTSHELL PANT | AWP12291 | CLEMATIS BLUE

PANTS



O356 CLEMATIS BLUE
9999 BLACK



U029 MOONBEAM
9999 BLACK



ARIANA SOFTSHELL SHORTS AWPA12292 | 37,5 DOUBLE WEAVE

New shorts in 37,5 fabric and TX shield 3L. Experience optimal comfort in any weather with advanced temperature regulating technology.

- Three spacious front hand pockets
- Bridge logo on right hand leg
- Belt loops
- Laminated parts to keep you dry
- Patented 37,5 technology from Cocona
- Helps to regulate optimal body temperature using volcanic ash technology
- Flexible 4-way stretch
- Lightweight softshell

Size: XS-XL
Material: 53% Polyester, 37% Recycled Polyester, 10% Spandex, 214gr/m2 GRS, Ökotex100, Recycled, PFC-free
Measurements: Inseam in size S is 19cm



9999 BLACK
9999 BLACK



6855 JL NAVY
9999 BLACK



DANAA PANT AWPA12290 | SCHOELLER 3L

Rainproof pant that is lightweight yet fully protective against rain and wind. Features taped seams and waterproof zippers in premium Schoeller 3L fabric.

- J.Lindeberg print on pocket
- Schoeller print on leg
- Aquaguard zips at pockets and bottom leg
- Pocket bags in stretch mesh
- Elastic waistband and beltloops
- Fully seamsealed
- Hidden zip at fly
- Waterproof 20K
- Breathability 20K
- Windproof
- Durable weaving structure

Size: XS-XL
Material: 76% Polyamide/Nylon, 24% Polyurethane, 147gr/m2 GRS, Ökotex100, Recycled, PFC-free
Measurements: Inseam in size S is 80cm

OUTERWEAR



9999 BLACK



SANAA HYBRID HOOD JACKET
AWOW12994 | POLYESTER/ MERINO BRUSH

Our hybrid jacket artfully combines merino wool and the advanced VX Re:ski fabric. Features padded panels at front.

- Bridge logo at chest
- J.Lindeberg text print on lower back
- Bridge print inside at center back
- Center front zipper
- Side pockets with zippers
- Bindings at sleeves and hood
- Naturally water repellent merino wool blend
- Merino wool blend for a comfortable temperature
- Brushed on inside
- Nylon parts with water repellent treatment

Size:	XS-XL
Material:	77% Polyester, 21% Merino Wool, 2% Elastan, 300 gr/m2 RWS,Ökotex100, Certified
Lining:	TSEC-0065A New Tlmes Lining 100% Polyester, Bluesign,Ökotex100
Padding:	100% Recycled Polyester, Primaloft, Recycled, Bluesign, GRS,Ökotex100



OUTERWEAR



C118 MOONBEAM MELANGE
O356 CLEMATIS BLUE (BLUE)
9999 BLACK



M311 OIL GREEN
9999 BLACK



SANAA HYBRID JACKET AWOW12215 | POLYESTER/ MERINO BRUSH

Slightly padded hybrid jacket with merino wool back and sleeve inserts.

- Bridge logo at chest
- J.Lindeberg text print on lower back
- Bridge print inside at center back
- Two-way zipper at front
- Mesh side pockets
- Side pockets with zippers
- Lightly padded over chest and shoulders
- Branded elastic band on bottom hem
- Naturally water repellent merino wool blend
- Merino wool blend for a comfortable temperature
- Brushed on inside
- Nylon parts with water repellent treatment

Size: XS-XL
Material: 77% Polyester, 21% Merino Wool, 2% Elastan, 300 gr/m2 RWS, Ökotex100, Certified
Lining: TSEC-0065A New Times Lining 100% Polyester, Bluesign, Ökotex100
Padding: 100% Recycled Polyester, Primaloft, Bluesign, GRS, Ökotex100



LYDE CAP | AMAC12173 | MOONBEAM
SANAA HYBRID JACKET | AWOW12215 | CLEMATIS BLUE
HOWARD SLING BAG | AMAC12169 | BLACK
ARIANA SOFTSHELL SHORTS | AWPA12292 | MOONBEAM

OUTERWEAR



C118 MOONBEAM MELANGE
O356 CLEMATIS BLUE (BLUE)
9999 BLACK



M311 OIL GREEN
9999 BLACK



SANAA HYBRID VEST
AWOW12216 | POLYESTER/ MERINO BRUSH

Slightly padded hybrid vest with merino wool and
VX RE:SKI fabric.

- Bridge logo at chest
- J.Lindeberg text print on lower back
- Bridge print inside at center back
- Two-way zipper at front
- Mesh side pockets
- Side pockets with zippers
- Lightly padded over chest and shoulders
- Branded elastic band on bottom hem
- Naturally water repellent merino wool blend
- Merino wool blend for a comfortable temperature
- Brushed on inside
- Nylon parts with water repellent treatment

Size:	XS-XL
Material:	77% Polyester, 21% Merino Wool, 2% Elastan, 300 gr/m2 RWS,Ökotex100, Certified
Lining:	TSEC-0065A New Times Lining 100% Polyester, Bluesign,Ökotex100
Padding:	100% Recycled Polyester, Primaloft, Bluesign, GRS,Ökotex100



OUTERWEAR



9999 BLACK
9999 BLACK



U029 MOONBEAM
9999 BLACK



M311 OIL GREEN
9999 BLACK



U250 SNAKE ROCK MOONBEAM M
9999 BLACK



MARTHA SHELL JACKET
AWOW12434 | 3L PRO

Our waterproof jacket that has waterproof zippers to make sure you stay dry in the rainy weather. This jacket is also windproof with a durable ripstop.

- Bridge logo on chest and center hood
- Aquad guard center front zippers
- Fully taped seams
- Soft fleece on top of zipper placket
- Print on bottom logo
- Waterproof 20K Breathability 20K
- Windproof
- Durable weave structure
- 3 layer fabric

Size: XS-XL
Material: 100% Nylon
Bluesign, PFC-free

MARTHA SHELL JACKET PRINT
AWOW14290 | 3L PRO

Our waterproof jacket that has waterproof zippers to make sure you stay dry in the rainy weather. This jacket is also windproof with a durable ripstop.

- Bridge logo on chest and center hood
- Aquad guard center front zippers
- Fully taped seams
- Soft fleece on top of zipper placket
- Print on bottom logo
- Waterproof 20K Breathability 20K
- Windproof
- Durable weave structure
- 3 layer fabric

Size: XS-XL
Material: 100% Nylon
Bluesign, PFC-free



OUTERWEAR



O356 CLEMATIS BLUE
9999 BLACK



U029 MOONBEAM
9999 BLACK



CAMILA CROPPED SOFTSHELL JKT AWOW12218 | 37,5 DOUBLE WEAVE

Our jacket made from a flexible soft shell fabric featuring patented 37,5 technology. It helps maintain optimal body temperature in cold and warm weather conditions.

- Hand pockets and chest pocket
- Bridge logo on left sleeve
- J.Lindeberg text print on bottom hem
- Hood with cord for adjustment
- Lined chest panels for clean inside
- Patented 37,5 technology from Cocona
- Helps to regulate optimal body temperature using volcanic ash technology
- Flexible 4-way stretch
- Lightweight softshell

Size: XS-XL
Material: 53% Polyester, 37% Recycled Polyester, 10% Spandex, 214gr/m2 GRS, Ökotex100, Recycled, PFC-free



LYDE CAP | AMAC12173 | MOONBEAM
CAMJLA CROPPED SOFTSHELL JKT | AWOW12218 | CLEMATIS BLUE
ARIANA SOFTSHELL PANT | AWP12291 | CLEMATIS BLUE



OUTERWEAR



9999 BLACK
9999 BLACK



6855 JL NAVY
9999 BLACK



ORIA JACKET AWOW12217 | SCHOELLER 3L

Lightweight yet fully protective from rain and wind.
Fully taped and with waterproof zippers in premium
Schoeller 3L fabric.

- JL bridge chest logo
- JL text on zipper placket
- Schoeller print on sleeve
- Aquaguard Two-way zip at front
- Aquaguard zip pockets
- Branded adjustable Velcro tabs at sleeves
- Visor shaped hood with cords adjusters
- Sleeve pocket
- Ventilation zippers under arms
- Waterproof 20K
- Breathability 20K
- Windproof
- Durable weaving structure

Size: XS-XL
Material: 76% Polyamide/Nylon, 24%
Polyurethane, 147gr/m²
Ökotex100, PFC-free



U250 SNAKE ROCK MOONBEAM M
9999 BLACK



AMY PONCHO AWOW12449 | 2L STRETCH

Our poncho with zipper for ultimate dryness,
made from a 4-way stretch fabric.

- Stretch lining at back yoke for ventilation
- Bridge logo on left sleeve
- Hood with elastic cord for adjusting
- Two-way zippers with opening for arms
- Welt hand pockets
- Waterproof 20K
- Breathability 20K
- Windproof

Size: XS-XL
Material: 100% Polyester, 125gr/m²
Bluesign, PFC-free

OUTERWEAR



9999 BLACK
0000 WHITE



U029 MOONBEAM
9999 BLACK



EMILIA PRO PACK WIND BLOCK AWOW12222 | FLEX TECH

Lightweight jacket with perforation under arms to offer ventilation. It has a packable bag at the back with a reflective print around.

- Bridge logo on chest
- Dotted Bridge logo at back
- J.Lindeberg text logo at back
- Packable in bag pocket
- Reflective tape around back pocket
- Lightweight
- Durable weaving structure
- Windproof
- Water repellent treated surface

Size: XS-XL
Material: 88% Polyamide,
12% Polyurethane, 53gr/m2



EMILIA PRO PACK WIND BLOCK | AWOW12222 | MOONBEAM
JULIANA PRO PACK VEST | AWOW12219 | BLACK
ASA SOFT COMPRESSION TOP | GWJT06333 | BLACK
NOVIA PRO PACK PANT | AWPA08903 | BLACK



OUTERWEAR



9999 BLACK
0000 WHITE



M311 OIL GREEN
9999 BLACK



JULIANA PRO PACK VEST
AWOW12219 | STRETCH WIND PRO

Our lightweight down vest is packable in the back pocket and easy to bring to any occasion.

- 2-way front zipper
- Bridge logo on chest
- Soft knitted panels
- Packable into a small pouch
- Reflective tape around pocket
- Water repellent
- Windproof
- Lightweight
- Stretch

Size: XS-XL
Material: 100% Polyester, 49gr/m2
Ökotex100, PFC-free
Padding: 90/10 DUCK DOWN
700 FILLPOWER
100% Down Traceable,
Allied Feathers



9999 BLACK
9999 BLACK



U029 MOONBEAM
9999 BLACK



CHRISANN SHORT SLEEVE PULLOVER
AWOW12220 | DOUBLE WEAVE STRETCH

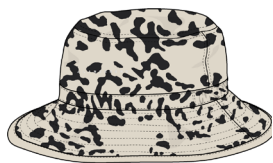
A modern and lightwweight crop top in a stretchy material with practical kangaroo pocket.

- JL bridge Laser cut perforation bridge at back
- JL text print at front
- Practical chest pocket with zipper and flap
- Welt pocket at back
- Light and airy
- 4 way stretch
- Water repellent coated
- Lightweight

Size: XS-XL
Material: 91% Recycled Polyester,
9% Elastane/Spandex, 127gr/m2
Bluesign,GRS,Ökotex100
Recycled, PFC-free



ACCESSORIES



C136 SNAKE ROCK MOONBEAM M
9999 BLACK

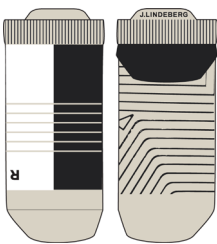


PARKER PRINTED BUCKET HAT
AWAC12388 | COTTON RIPSTOP

Bucket hat in cotton ripstop with elastic adjuster for a perfect fit.

- J Lindeberg silicone text logo at front
- Power mesh sweat band
- Circular adjuster for perfect fit
- Circumference 58cm
- Yarn is Oeko tex certified

Size: One Size
Material: 100% Cotton
Ökotex100



U029 MOONBEAM
0000 WHITE
9999 BLACK



RIVER SOCK
AWAC12179 | ACTIVE VENT KNIT

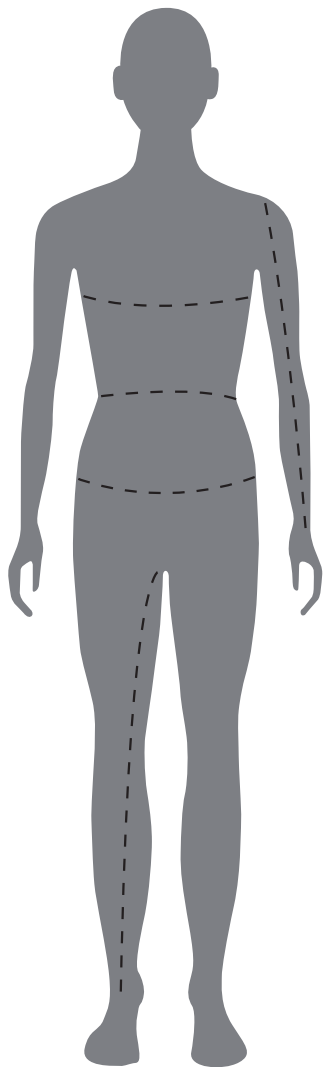
Sock with a comfortable frotté bed. Features jacquarded J.Lindeberg text at back in contrast color.

- Jacquard knitted J Lindeberg text at center back
- Frotté foot bed for ultimate comfort
- Made in Sweden
- Yarn is Oeko tex certified

Size: 35-40
Material: 75% BCI Cotton,
15% Polyamide/Nylon,
10% Lycra
Ökotex100



MEASUREMENTS



- CHEST

Measure around the chest at the fullest part, placing the tape close up under the arms.
- WAIST

Measure your waist at its narrowest part.
- SEAT

Measure your hip at the widest part.
- ARM

From the tip of your shoulder to the wrist.
- INSIDE LEG

The distance from the top of your inside leg to the floor.

	XS	S	M	L	XL	XXL
LENGTH			168/66D172/67,5			
CHEST	78/30,5	84/33	90/35,5	96/38	102/40	108/42,5
WAIST	62/24,5	68/27	74/29	80/31,5	86/34	92/36
SEAT	87/34,5	93/36,5	99/39	105/41,5	111/43,5	117/46
TIGH	55,5/22	57/22,5	58,5/23	60,5/24	61,5/24	63/25
INNER LEG	77,5/30,5	79/31	80,5/31,5	82/32,5	83,5/33	85/33,5
BICEP	24/9,5	26/10	27,5/11	29,5	31/12	33/13
ARM LENGTH	55,5/22	57/22,5	58,5/23	60/11,5	61,5/24	63/25

GARMENT MEASUREMENTS

All measurements are in cm and inches and show the total garment width.
Size is M and 31".

CONTACTS

WHOLESALE FASHION

GLOBAL SALES DIRECTOR / FASHION

Mads Thisted
mads.thisted@jlindeberg.com
+ 46 70 353 89 84

NORDICS / BALTICS

SALES MANAGER & TEAM LEAD

Hannes Alpsjö
hannes.alpsjo@jlindeberg.com
+ 46 73 087 49 88

SALES EXECUTIVE / NORWAY

Jonas Olsson
jonas.olsson@jlindeberg.com
+ 47 966 83 869

SALES EXECUTIVE / SWEDEN

Amanda Nordquist
amanda.nordquist@jlindeberg.com
+ 46 73 819 17 00

SR SALES EXECUTIVE / SWEDEN

Sophie Olsson
sophie.olsson@jlindeberg.com
+ 46 73 033 16 00

MID EUROPE

SR SALES MANAGER

Alexander Abraham
alexander.abraham@jlindeberg.com
+ 49 151 1167 21 65

DENMARK

COUNTRY MANAGER

Marius Pedersen
marius.pedersen@jlindeberg.com
+ 45 31 22 60 23

FINLAND & BALTICS

SALES MANAGER

Sasu Kurki
HYPERLINK sas@theagencyfin.fi
+ 358 40 523 0279

UK / SALES MANAGER

Joff Fisher
joff.fisher@jlindeberg.com
+ 44 7726 241254

DIRECTOR OF SALES US

Karen Castellano
karen.castellano@jlindeberg.com
+ 1 (917) 747 77 45

WHOLESALE SPORT

GLOBAL SALES DIRECTOR / SPORT

Florian Gross
florian.gross@jlindeberg.com
+ 49 151 516 117 5

NORTH AMERICA PRESIDENT

Scott Davis
scott.davis@jlindeberg.com
+ 1 (561) 818 85 57

MIDEU SALES DIRECTOR / SPORT

Mario Messerli
mario.messerli@jlindeberg.com
+ 41 79 444 8605

MID EUROPE SALES MANAGER GOLF AND TENNIS

Felix Burmann
felix.burmann@jlindeberg.com
+ 49 174 2093925

MID EUROPE SALES MANAGER SKI & OUTDOOR

Max Kreipl
max.kreipl@jlindeberg.com
+ 49 160 2419 220

GERMANY / EASTERN EUROPE SALES EXECUTIVE

Golf and Tennis
Fabio Irrgang
Fabio.Irrgang@jlindeberg.com
+49 151 70408190

SWITZERLAND / COUNTRY MANAGER

Reto Lendenmann
Reto.lendenmann@jlindeberg.com
+ 41 79 287 93 25

ITALY

Philipp Putzer/Summit Sports
philipp@summitsports.it
+ 39 335 5631410

UK SALES DIRECTOR / SPORT

Rob Tankard
robert.tankard@jlindeberg.com
+ 44 7817221425

UK SALES MANAGER / GOLF AND TENNIS

Chris Watson
chris.watson@jlindeberg.com
+ 44 7540368828

UK SENIOR SALES EXECUTIVE / GOLF AND TENNIS

NORTHERN UK AND IRELAND
Rob Allison
+ 44 7754678772
rob.allison@jlindeberg.com

SOUTH REGION / SPORT SALES EXECUTIVE

Ben Plumridge
ben.plumridge@jlindeberg.com
07857937593

UK / SALES MANAGER LIFESTYLE & SPORT

Joff Fisher
joff.fisher@jlindeberg.com
+ 44 7726 241254

SCANDINAVIA WHOLESALE MANAGER / SPORT

Joakim Ågren
joakim.agren@jlindeberg.com
+ 46 76 000 64 10

DENMARK

COUNTRY MANAGER SPORT / FASHION

Marius Pedersen
marius.pedersen@jlindeberg.com
+45 31 226 023

NORTH SWEDEN AND KA SENIOR SALES EXECUTIVE

Henrick Broman
Henrick.broman@jlindeberg.com
+46 70 886 65 65

SOUTH SWEDEN SALES EXECUTIVE

Lisa Hörnblad
Lisa.hornblad@jlindeberg.com
+46 70 527 23 19

JEIJE AB FINLAND / BALTICS SPORT

Jari Tanninen
Jari.tanninen@jeije.fi
+358 40 022 3288

CHINA

Winston Lowe
winston.lowe@jlindeberg.com.com

DISTRIBUTORS

EXPORT MANAGER

Joakim Westtorp
joakim.westtorp@jlindeberg.com
+ 46 73 421 66 60

SALES MANAGER ASIA & SOUTH PACIFIC

Mikaela Laurén
mikaela.lauren@jlindeberg.com
+46 70 749 59 68

BENELUX / LEXSON BRAND

Luke vad Shaik
luke@lexson.com
+31 76 522 3186

SOUTH KOREA / SHINSEGAE INTERNATIONAL

Claire Kim
claire.kim@sikorea.co.kr
+ 82 10 886 116 04

HONG KONG / YGM TRADING LTD

maylaw@ygmtrading.com
+ 85 29 131 83 78

AUSTRALIA / UCHOOSE GOLF

clint.anderson@uchoosegolf.com
+ 61 45 105 22 35

SPAIN / PORTUGAL/ GREECE

FRANCE GOLF

HOLIDAY GOLF
Stefan Tjellander
stefan.tjellander@holidaygolf.com
+34 666 56 1057

SOUTH EAST ASIA / SUN GOLF

tanjh@sungolf.org
+65 8533 9800

CANADA / TC2 GROUP

mail@tc2group.ca
416 703 4566

JAPAN / FDR CORPORATION

seiichi.sakaeda@fdrsports.co.jp
+080 4443 0237

UNITED ARAB EMIRATES E GOLF INTERNATIONAL LLC

Dean Cheasley
dean.cheasley@egolfoutlet.ae
+ 97 1506 53 9617

SOUTH AMERICA / CARIBBEAN BORA SERVICES

iviamata@boraservicesrl.com
+1 (829) 659 9606

MARKETING & COMMUNICATIONS

HEAD OF MARKETING & PR

Karin Elwin
karin.elwin@jlindeberg.com
+46 735 42 09 55

WHOLESALE SPORTS MARKETING MANAGER

Jonas Janssen
jonas.janssen@jlindeberg.com

PROJECT MANAGER

Sara Radjaian
sara.radjaian@jlindeberg.com
+46 704 21 13 21

PR MANAGER

Elin Englbretsson
elin.englbretsson@jlindeberg.com
+46 708 41 61 62

SENIOR MARKETING & PR USA

Emilia Esser
emilia.esser@jlindeberg.com
+1 (929) 364 3679

MARKETING & PR CHINA

Xiaolei Ma
xiaolei@jlindeberg.com.cn

